

# ROOMS & SPACES

## ENTIRE VENUE

The entire conference and exhibition spaces at NEX is enormous and versatile, consisting of five segregated spaces and a striking lobby area, digital entry screens and 3x3 video entry wall.

**Size:** Entire venue 2,511m<sup>2</sup>

## THE ARENA

The Arena is imposing in size and features. It has a private bar, large 298m<sup>2</sup> dance floor, in-house PA system, artists' rooms and toilet facilities. Loaded with the latest technical equipment The Arena is the largest space that NEX has to offer and has the capacity to hold up to 2,400 people. The Arena offers a multifunctional large scale live performance space to cater for local and international acts, as well as a dynamic program of entertainment including comedy, dinner shows and theatre.

**Size:** 1,195m<sup>2</sup>

**Cost:** CATERED: Mon–Thurs \$2,500, Fri–Sun \$2,850 (Galas, balls, award shows, conferences, etc)

NON-CATERED: Mon–Thurs \$3,000, Sun \$3,500 (Presentations, meetings, etc)

EXPO HIRE: Mon–Thurs \$5,000, Fri–Sun \$6,000

CONCERT HIRE: Mon–Thurs \$4,700, Sun \$5,400

### Private Bar

NEX offers a first class production for an event or live performance of any size. The venue has the flexibility to utilise lighting and visual effects and curtain drapes to make the space seem intimate for a small gathering or expansive and extravagant for a larger event. Boasting four bars, an impressive 289m<sup>2</sup> dance floor and two fully equipped dressing rooms NEX has the facilities to make your event a success.

### Capacity

The Arena	1,195m <sup>2</sup>
Standing	2,400 PAX
Standing (Curtains)	1,200 PAX
Theatre	1,280 PAX
Cabaret	448 PAX
Banquet	600 PAX
Banquet (w/dance floor)	560 PAX

**T** 02 4926 6200

**F** 02 4929 3695

**E** info@thenex.com.au

309 King Street Newcastle West 2302

PO Box 2305 Dangar NSW 2309

ABN 24 000 973 919

NEWCASTLE  
EXHIBITION &  
CONVENTION  
CENTRE

**NEX.**

# ROOMS & SPACES

## TECHNICAL DETAILS

### Production

The Arena features an impressive speaker system– the Martin Audio Multi-Cellular Array system. The audio system has been acoustically engineered by Martin Audio and will provide premium audio quality for any entertainment format or music type. Lighting includes 24 Martin wash lights to fully cover the stage. The three large on stage screens give flawless projection from the brand new EPSON 11000 ansi lumen projectors. Each screen can work separately or for a grand statement they can feature the same projection.

### Stage

The stage is 9 metres deep, by 16 metres wide, and 1.1 metres high, with a stage to ceiling height of 9 metres. It has a motorised front curtain, and manual side and back curtains.

### Rigging

Clients need to submit a rigging plan for approval.

### Loading Dock

The loading dock is situated at the southern end of the building, on Bull Street. It has two loading doors with a flat load-in to The Arena.

### Lighting

NEX has a house lighting system that includes a mixture of Rush profile and wash, as well as lights that can be dimmed if required.

### Dressing Rooms

The Arena has two dressing rooms, which includes a bathroom and two separate showers.

### Seating

Temporary seating is available with a total capacity of 1,280.

### Curtains and Drapes

There is a curtain track on each of the western and eastern sides of the room that allows a reduction in the size of The Arena. These tracks are fitted with black wool curtains.

### Foyer

A portable Guest Relations desk and merchandise outlets are available to be placed in the foyer.

### Air Conditioning

The Arena is fully air-conditioned.

### Public Address System

There is an in-house PA system that provides coverage to the auditoriums and foyer.

# ROOMS & SPACES

## THE EXTRA

The Extra is a large space featuring a private bar, a 130m<sup>2</sup> dance floor and dedicated toilet facilities.

**Size:** 412m<sup>2</sup>

**Capacity:** 830 (standing)

**Cost:** CATERED: Mon–Thurs \$1,000, Fri–Sun \$1,200; NON-CATERED: Mon–Thurs \$1,200, Fri–Sun \$1,500

**Dancefloor:** 130m<sup>2</sup>

**Private Bar**

**Stage:**

The stage is 6 metres deep, by 9 metres wide, and 3 metres high floor to ceiling.

**Rigging:**

Clients need to submit a rigging plan for approval.

**Loading Dock:**

The loading dock is accessed from Bull Street. It has two loading doors with a flat load-in to The Extra.

**Lighting:**

NEX has a house lighting system that can be dimmed.

**Dressing Rooms:**

The Extra has two dressing rooms, which include a bathroom and two separate showers.

**Seating:**

Temporary seating is available with a total capacity of 400.

**Foyer:**

A portable Guest Relations desk and merchandise outlets are available.

**Air Con:**

The Extra is fully air-conditioned.

**Public Address System:**

There is an in-house PA system that provides coverage to room.

**T** 02 4926 6200

**F** 02 4929 3695

**E** [info@thenex.com.au](mailto:info@thenex.com.au)

309 King Street Newcastle West 2302

PO Box 2305 Dangar NSW 2309

ABN 24 000 973 919

NEWCASTLE  
EXHIBITION &  
CONVENTION  
CENTRE

**NEX.**

# ROOMS & SPACES

## THE AVENUE

The Avenue features floor to ceiling windows that drench the space in light during the day. This space features a private bar area.

**Size:** 774m<sup>2</sup>

**Capacity:** 600 (standing)

**Cost:** Mon–Thurs \$1,000, Fri–Sun \$1,200

**Private Bar**

## THE VIVID

A smaller room ideal for meetings or intimate parties, The Vivid has a small private bar, retractable screen and dedicated toilet facilities.

**Size:** 130m<sup>2</sup>

**Capacity:** 120 (cocktail)

**Cost:** Mon–Thurs \$400, Fri–Sun \$450

**Private Bar**

## KING STREET ROOM

A mid-size room ideal for meetings or parties, King Street Room has a small private bar and retractable screen.

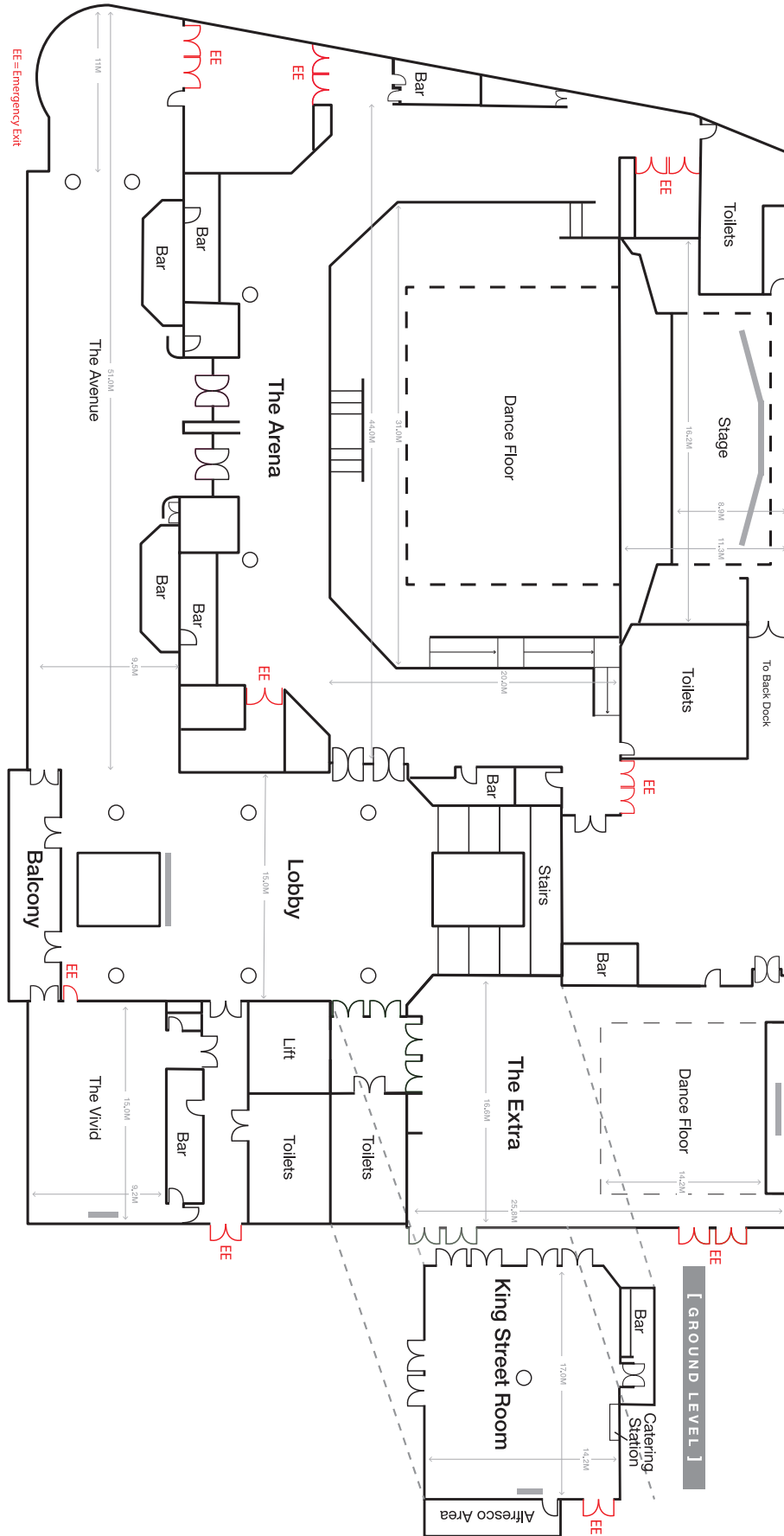
**Size:** 241m<sup>2</sup>

**Capacity:** 160 (cocktail)

**Cost:** Mon–Thurs \$450, Fri–Sun \$600

**Private Bar**

# FLOOR PLAN



T 02 4926 6200  
 F 02 4929 3695  
 E info@thenex.com.au  
 309 King Street Newcastle West 2302  
 PO Box 2305 Dangar NSW 2309  
 ABN 24 000 973 919

NEWCASTLE  
 EXHIBITION &  
 CONVENTION  
 CENTRE

